

Snubber

Model : A050

Spec. sheet no. AD00-05

Service intended

It is used for suppressing the effect of pressure pulse and pressure spike. It features the adjustable needle valve to restrict the flow as operating conditions may demand.

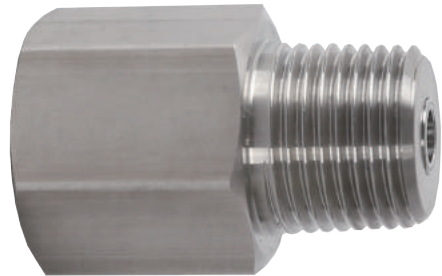
CRN

Standard features

Max. working pressure
Stainless steel : Up to 160 MPa, at 20 °C, G½"

ASME B1.1 Appendix B

Max. working temperature : -10 to 120 °C



※ This product's Max. working temperature could be varied depending on its working pressure and temperature.

Main order

Ordering information

1. Base model

A050 Snubber

2. Unused type

A None

3. Material

D 316SS
F 316L SS
Z Other

4. Gauge connection size

0 ¼"
1 ⅜"
2 ½"
9 Other

5. Gauge connection type

A PF (F)
B PT (F)
C NPT (F)
Z Other

6. Process connection size

B ¼"
C ⅜"
D ½"
Z Other

7. Process connection type

G PF (M)
H PT (M)
J NPT (M)
Z Other

8. Unused character

A0000 None

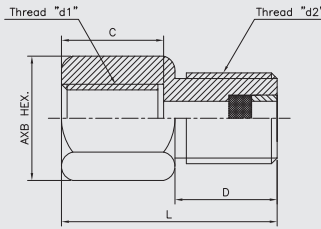
1	2	3	4	5	6	7	8
A050	A	D	0	A	C	G	A0000

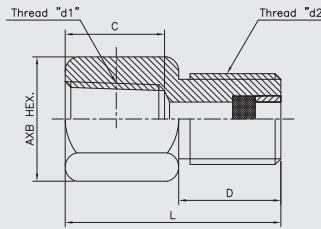
Sample
ordering code

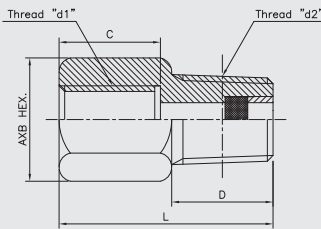
WISE[®]

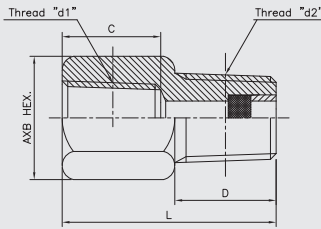
I A050_01

A050 : Type of mounting

	d1	d2	d1 x d2	L	C	D	AXB HEX.	Ordering code (7 th and 10 th characters)	
	PF1/4	PF1/4	PF1/4 X PF1/4	36		16		19X21.9	0ABG
PF1/4	PF3/8	PF1/4 X PF3/8	40	16	18		0ACG		
PF1/4	PF1/2	PF1/4 X PF1/2	42	20	20		27X31.2	0ADG	
PF3/8	PF1/4	PF3/8 X PF1/4	39		16		1ABG		
PF3/8	PF3/8	PF3/8 X PF3/8	41	18	18		27X31.2	1ACG	
PF3/8	PF1/2	PF3/8 X PF1/2	43	20	20		1ADG		
PF1/2	PF1/4	PF1/2 X PF1/4	40		16		2ABG		
PF1/2	PF3/8	PF1/2 X PF3/8	42	20	18		27X31.2	2ACG	
PF1/2	PF1/2	PF1/2 X PF1/2	44	20	20		2ADG		

	d1	d2	d1 x d2	L	C	D	AXB HEX.	Ordering code (7 th and 10 th characters)	
									NPT TYPE
PF1/4	(N)PT1/4	PF1/4 X (N)PT1/4	36		14		19X21.9	0ABJ	0ABH
PF1/4	(N)PT3/8	PF1/4 X (N)PT3/8	38	16	16		0ACJ	0ACH	
PF1/4	(N)PT1/2	PF1/4 X (N)PT1/2	40	18	18		27X31.2	0ADJ	0ADH
PF3/8	(N)PT1/4	PF3/8 X (N)PT1/4	38		14		1ABJ	1ABH	
PF3/8	(N)PT3/8	PF3/8 X (N)PT3/8	40	18	16		27X31.2	1ACJ	1ACH
PF3/8	(N)PT1/2	PF3/8 X (N)PT1/2	42	20	18		1ADJ	1ADH	
PF1/2	(N)PT1/4	PF1/2 X (N)PT1/4	38		14		2ABJ	2ABH	
PF1/2	(N)PT3/8	PF1/2 X (N)PT3/8	40	20	16		27X31.2	2ACJ	2ACH
PF1/2	(N)PT1/2	PF1/2 X (N)PT1/2	42	20	18		2ADJ	2ADH	

	d1	d2	d1 x d2	L	C	D	AXB HEX.	Ordering code (7 th and 10 th characters)	
									NPT TYPE
(N)PT1/4	PF1/4	(N)PT1/4 X PF1/4	37		16		19X21.9	0CBG	0BBG
(N)PT1/4	PF3/8	(N)PT1/4 X PF3/8	39	14	18		0CCG	0BCG	
(N)PT1/4	PF1/2	(N)PT1/4 X PF1/2	41	20	20		27X31.2	0CDG	0BDG
(N)PT3/8	PF1/4	(N)PT3/8 X PF1/4	39		16		1CBG	1BBG	
(N)PT3/8	PF3/8	(N)PT3/8 X PF3/8	41	16	18		27X31.2	1CCG	1BCG
(N)PT3/8	PF1/2	(N)PT3/8 X PF1/2	43	20	20		1CDG	1BDG	
(N)PT1/2	PF1/4	(N)PT1/2 X PF1/4	41		16		2CBG	2BBG	
(N)PT1/2	PF3/8	(N)PT1/2 X PF3/8	43	18	18		27X31.2	2CCG	2BCG
(N)PT1/2	PF1/2	(N)PT1/2 X PF1/2	45	20	20		2CDG	2BDG	

	d1	d2	d1 x d2	L	C	D	AXB HEX.	Ordering code (7 th and 10 th characters)	
									NPT TYPE
(N)PT1/4	(N)PT1/4	(N)PT1/4 X (N)PT1/4	34		14		19X21.9	0CBJ	0BBH
(N)PT1/4	(N)PT3/8	(N)PT1/4 X (N)PT3/8	36	14	16		0CCJ	0BCH	
(N)PT1/4	(N)PT1/2	(N)PT1/4 X (N)PT1/2	38	18	18		27X31.2	0CDJ	0BDH
(N)PT3/8	(N)PT1/4	(N)PT3/8 X (N)PT1/4	36		14		1CBJ	1BBH	
(N)PT3/8	(N)PT3/8	(N)PT3/8 X (N)PT3/8	38	16	16		27X31.2	1CCJ	1BCH
(N)PT3/8	(N)PT1/2	(N)PT3/8 X (N)PT1/2	40	18	18		1CDJ	1BDH	
(N)PT1/2	(N)PT1/4	(N)PT1/2 X (N)PT1/4	40		14		2CBJ	2BBH	
(N)PT1/2	(N)PT3/8	(N)PT1/2 X (N)PT3/8	42	18	16		27X31.2	2CCJ	2BCH
(N)PT1/2	(N)PT1/2	(N)PT1/2 X (N)PT1/2	44	20	18		2CDJ	2BDH	