

Magnetic float type level gauge

Model : L300 series

Spec. sheet no. LD03-01



L300 (Chamber size-50A)

Standard specification

Chamber size

2B (50A)

Schedule

SCH. 10S, 20S, 40S, etc

Flange rating

150 ~ 1,500 Lb

Material

304SS, 316SS, 316L SS, PVC, etc.

Indicator method

Magnetic

Max. pressure

14 MPa

Max. temperature

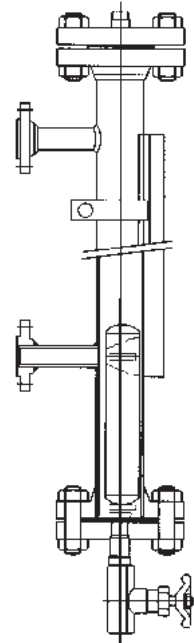
400 °C

Specific gravity

Min. 0.45

Viscosity

Max. 50 CP



L300 (Chamber size-65A)

Standard specification

Chamber size

2½B (65A)

Schedule

SCH. 10S, 20S, 40S, 80S, etc

Flange rating

150 ~ 2,500 Lb

Material

304SS, 316SS, 316L SS, etc.

Indicator method

Magnetic

Max. pressure

23 MPa

Max. temperature

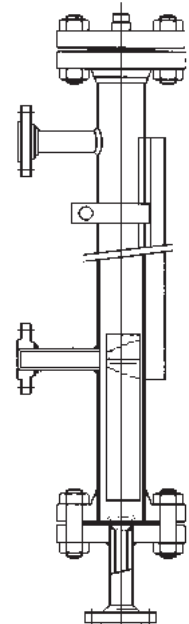
400 °C

Specific gravity

Min. 0.45

Viscosity

Max. 50 CP



1. Base model**L300** Magnetic float type level gauge**2. Vessel connection size**

ANSI		JIS	
AA	½" 150 Lb RF	JA	15A 10K RF
AB	½" 300 Lb RF	JB	15A 20K RF
AC	½" 600 Lb RF	JC	15A 30K RF
AD	¾" 150 Lb RF	JD	20A 10K RF
AE	¾" 300 Lb RF	JE	20A 20K RF
AF	¾" 600 Lb RF	JF	30A 30K RF
AG	1" 150 Lb RF	JG	25A 10K RF
AH	1" 300 Lb RF	JH	25A 20K RF
AI	1" 600 Lb RF	JI	25A 30K RF
AJ	1½" 150 Lb RF	JJ	40A 10K RF
AK	1½" 300 Lb RF	JK	40A 20K RF
AL	1½" 600 Lb RF	JL	40A 30K RF
AM	2" 150 Lb RF	JM	50A 10K RF
AN	2" 300 Lb RF	JN	50A 20K RF
AO	2" 600 Lb RF	JO	50A 30K RF
AP	½" NPT	JP	½" PT
AQ	¾" NPT	JQ	¾" PT
OH	Other		

3. Chamber material

S1 Body - 304SS / Float - Titanium
S2 Body - 316SS / Float - Titanium
ZZ Other

4. Center to center (mm)**XXXX****5. Chamber size**

5 50A
6 65A
Z Other

6. Chamber lining

P PTFE
E ETFE
F PFA
O Other
N None

7. Drain end

D Dust-proof cap inserted
P With plug
O Other

8. Level switch

Y Yes
N No

9. Level transmitter

Y Yes
N No

10. Float material

T Titanium (Standard)
S 316SS
O Other

11. Option 1

LS Level switch (LMS-20)
LT Level transmitter (LEXIS-60)
LN Lining
NO None

12. Option 2

F Non-frosting
J Jacket
U Underground tanks
N None

1	2	3	4	5	6	7	8	9	10	11	12
L300	JG	S2	XXXX	5	P	D	Y	Y	T	LT	N

Optional Level switch and transmitter for L300

Spec. sheet no. LD03-02

Description

The level switch is installed on a certain place of column or magnet chamber. It operates on - off control by means magnetic force of the float when it comes up or down to the exact place of switch located, (the switch is constructed as explosion-proof Exd IIB+H2T5).

Specification

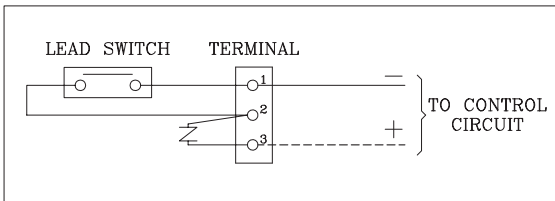
Model No.	LMS-20 (Level switch)	LEXIS-60 (Level transmitter)
Max. current DC-A	0.5 A	4 ~ 20 mA
Max. voltage DC-V	100 V	5 ~ 40 V
Temperature range	-10 ~ 80 °C	-10 ~ 80 °C
Piping	PF ½	PF ½
Remark	Exd IIB+H ₂ T ₅	Exd IIB T ₅ IP65

Option

Alarm switch has the self-holding type reed switch. That is, when the N pole of magnet float is coming near, the switch will be closed (on). After the magnet float passed by, the switch still remain closed (on). And when the magnet is coming back, the switch will be open (off) again. And after the magnet passed away, the switch still remain open (off) also. When the switch is installed upside down, the on-off operation of above will be revised. Therefore, the operation (on-off) is easy to change on the side.



As our switch has no polarization, it makes no problem in electric circuit whether wires are connected with terminal 1 or 2



Large empty rectangular area for writing or drawing.

Optional Magnetic float type level gauge with lining for L300

Spec. sheet no. LD03-03



Chamber size

50A, 65A

Chamber thickness

SCH. 10S, 20S, 40S, etc.

Flange rating

ANSI 150 ~ ANSI 600 Lb

Chamber material

304SS, 316SS

Lining parts

Inside of chamber

Lining material

Teflon, Rubber

Indicator method

Magnetic

Max. pressure

2.0 MPa

Max. temperature

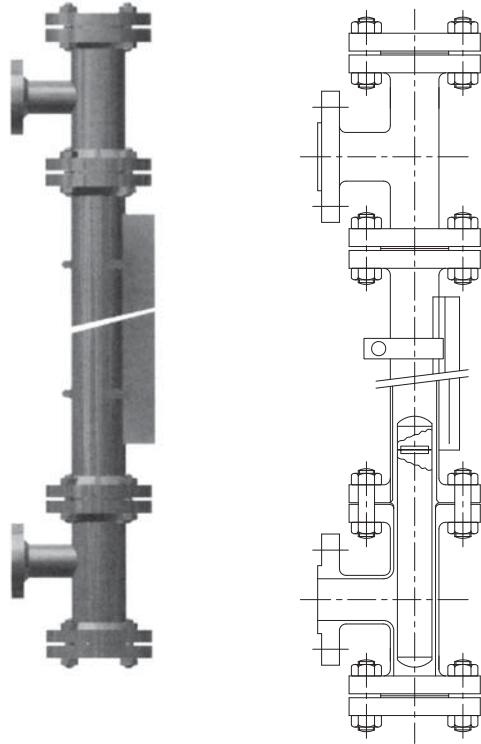
130°C

Specific gravity

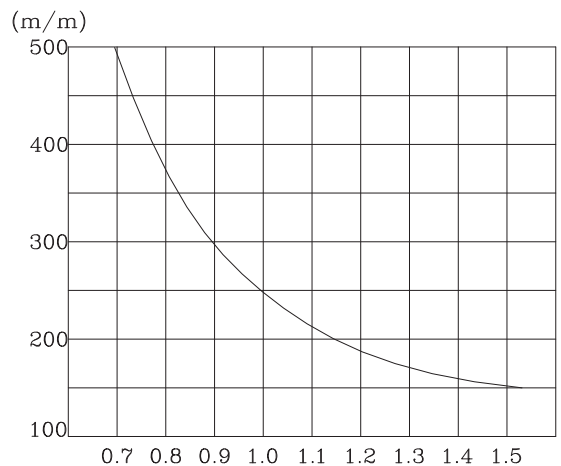
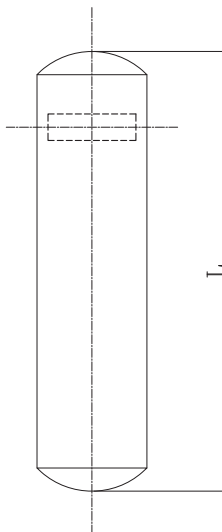
Min. 0.45

Viscosity

Max. 50 CP



Float length



Memo

Large empty rectangular box for writing.