

# Differential pressure gauge

## Model: P620, P630 series

Spec. sheet no. **PD06-01**

### Service intended

P620 and P630 series are designed to measure differential pressure from 1 kPa to 1.5 MPa at Max. working pressure up to 5 and 25 MPa. A set of stainless steel bellows mounted on a force balance allows direct reading of the actual differential pressure.



### Nominal diameter

100 and 160 mm

### Accuracy

±1.0 % of full scale

±1.6 % of full scale

### Scale range (MPa, kPa, bar)

0 ~ 1 kPa to 0 ~ 50 kPa

0 ~ 0.1 MPa to 0 ~ 1.5 MPa

### Max. Working pressure (Static pressure)

P620 : 5 MPa

P630 : 25 MPa

### Working temperature

Ambient : -20 ~ 65 °C

Fluid : Max. 100 °C

### Degree of protection

EN60529/IEC529/IP67

### Temperature effect

Accuracy at temperature above and below the reference temperature (20 °C) will be effected by approximately ±0.5 % per 10 °C of full scale



## Standard features

### Pressure connection

Stainless steel (316SS)

### Element

Bellows

Stainless steel (316L SS)

### Case

Stainless steel (304SS)

### Cover

Stainless steel (304SS)

Bayonet type

### Window

Safety glass

### Dial

White aluminium with black graduations

### Pointer

Black painted aluminium alloy

### Process connection

1/4" NPT(F)

1/2" NPT(F) at 3-way and 5-way manifold valve

### Standard accessories

Mounting bracket for 2" pipe

mounting with silver gray finished steel

### Certificates

Pressure equipment directive (2014/68/EU) Annex III Module H

### Option

- Remote seal
- Mounting bracket with 316SS for 2" pipe mounting
- 3-way manifold valve (316SS, Monel)
- 5-way manifold valve (316SS, Monel)

**WISE®**

| P620.P630\_01

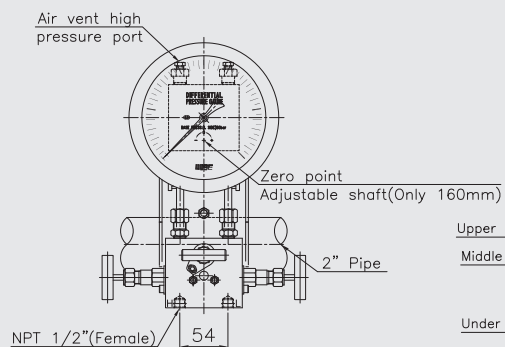
**1. Base model****P620** Differential pressure gauge (Max.working pressure : 5 MPa)**P630** Differential pressure gauge (Max.working pressure : 25 MPa)**2. Nominal diameter (mm)****4** 100**6** 160**3. Type of mounting****D** Bottom connection, mounting bracket for 2" pipe**L** Bottom connection, flush, case center mounting plate**4. Accuracy****3** ±1.0 % of full scale**4** ±1.6 % of full scale**5. Process connection****C** ¼" NPT(F)**E** ½" NPT(F), only at 3-way and 5-way manifold valve**6. Mounting bracket****D** Standard bracket**E** 304SS mounting bracket**F** 316SS mounting bracket**W** Wall mounting bracket (316SS)**N** None**7. Unit****H** bar**I** MPa**J** kPa**S** mbar**8. Range****041** 0 ~ 0.1 MPa**042** 0 ~ 0.2 MPa**043** 0 ~ 0.3 MPa**044** 0 ~ 0.4 MPa**045** 0 ~ 0.6 MPa**047** 0 ~ 1 MPa**050** 0 ~ 1.5 MPa**457** 0 ~ 1 kPa, not available with remote seal type**460** 0 ~ 2 kPa, not available with remote seal type**462** 0 ~ 3 kPa, not available with remote seal type**464** 0 ~ 4 kPa, not available with remote seal type**465** 0 ~ 5 kPa, not available with remote seal type**469** 0 ~ 10 kPa**437** 0 ~ 20 kPa**518** 0 ~ 30 kPa**040** 0 ~ 50 kPa**9. Dial color****3** 2 colors**10. Option****0** Standard (2" mounting bracket)**1** Accessories (3-way or 5-way manifold valve)**2** Standard and glycerin filling**3** Manifold valve and glycerin filling**6** Standard and silicone filling**7** Manifold valve and silicone filling

1	2	3	4	5	6	7	8	9	10
P620	6	D	4	E	D	I	047	3	2

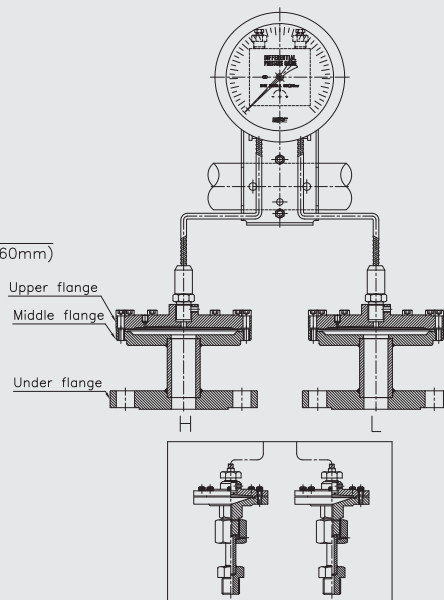
Sample  
ordering code

## P620, P630 : Type of mounting (1/2)

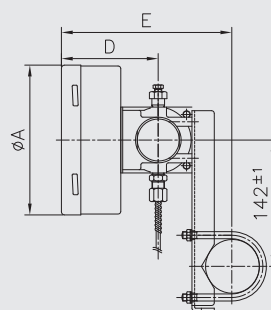
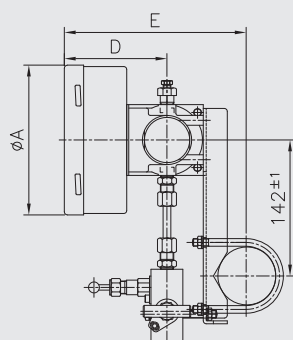
Code ( D ) P620 and P630



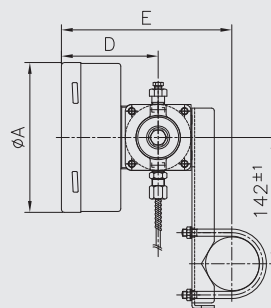
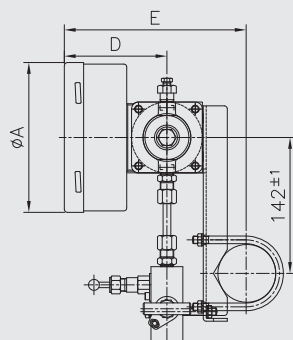
Code ( D ) P620 and P630(Remote seal)



P620



P630



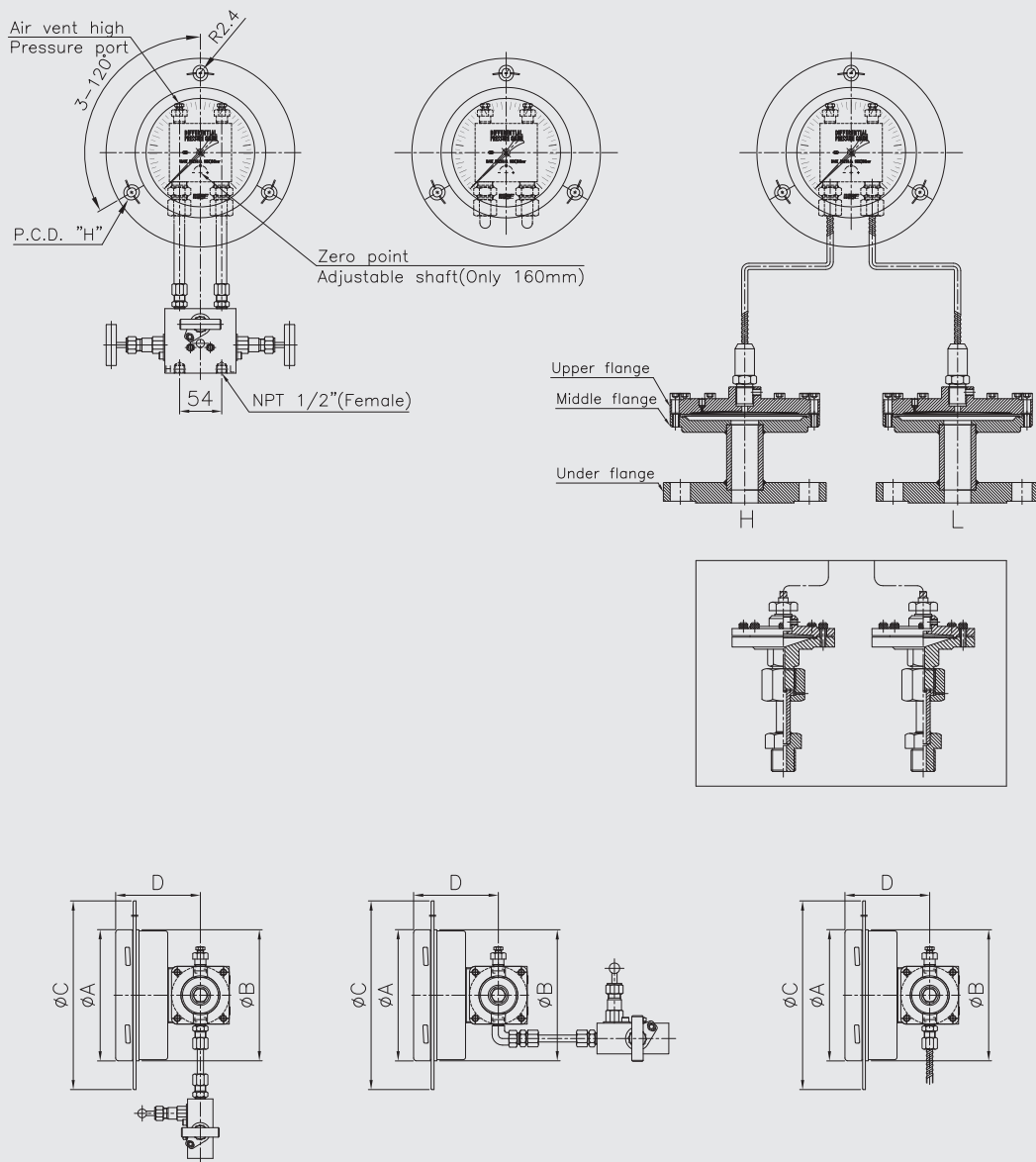
Dimensions (mm)

Dial size	A	D $\pm 2$	E $\pm 2$
100	101.3	98	180.5
160	160.6	106	190

## P620, P630 : Type of mounting (2/2)

Code ( L ) P620 and P630

Code ( L ) P620 and P630(Remote seal)



Dimensions (mm)

Dial size	A	B	C	D $\pm 2$	H
100	101.3	100.5	132	98	115~116
160	160.6	162	192	106	175.5~176.5